



OPERATING INSTRUCTION MANUAL

MODEL P/R60 & P/R65 DIFFERENTIAL PH & ORP PROBES

N116-19 REV. 10

AquaMetric Inc.
1245 Maple Hill Court, Unit 7
Newmarket, ON
Canada, L3Y 9E8

Tel: (800) 742-1413
(905) 954-0841
Fax: (905) 954-0415
www.aquametric.com

TABLE OF CONTENTS

1.0	GENERAL INFORMATION	4
2.0	SPECIFICATIONS	5
3.0	INSTALLATION	6
3.1	General Instructions	6
3.2	ORP 4-20 mA Probes, R65	6
3.3	Submersion Mounting Series 8 Differential Probes	6
3.4	Submersion Mounting Series 6 Differential Probes	7
3.5	Flow-through tee mounting Series 8 Differential Probes	7
3.6	Flow-through tee mounting Series 6 Differential Probes	7
3.7	Sanitary Probe P60S, P65S, R60S, R65S	7
3.8	Insertion mounting Series 4 Differential Probes	8
3.9	Hot/Wet tap insertion mounting Series 7 Differential Probes	8
4.0	SERVICE AND MAINTENANCE	8
4.1	Probe Cleaning	8
4.2	Replacement of Salt Bridge for Series 4, 6, 7 & S Differential Probes	9
4.3	Replacement of Salt Bridge for Series 8 Differential Probes	9
4.4	Storage	9
5.0	TROUBLESHOOTING AND SERVICE	10
5.1	Checking 5-wire Differential Probes P60 and R60	10
5.2	Checking Probes P65 and R65 (4-20 mA output)	11
5.3	Customer Service	12
5.4	Parts and Accessories	12
5.5	Probe Return	13

6.0	DRAWINGS	14
6.1	N106-61 SERIES 4 DIFFERENTIAL pH/ORP PROBES	14
6.2	N106-183 SERIES 6 DIFFERENTIAL pH/ORP PROBES	15
6.3	N106-184 SERIES 7 DIFFERENTIAL pH/ORP PROBES	16
6.4	N106-182 SERIES 8 DIFFERENTIAL pH/ORP PROBES	17
6.5	N106-62 SERIES S DIFFERENTIAL pH/ORP PROBES	18
6.6	N105-73 INSTALLATION OF SERIES 6 DIFFERENTIAL PROBES	19
6.7	N106-79 INSTALLATION OF SERIES 7 DIFFERENTIAL PROBES	20
6.8	N105-72 INSTALLATION OF SERIES 8 DIFFERENTIAL PROBE	21
6.9	N106-60 INSTALLATION OF SALT BRIDGE IN A DIFFERENTIAL PROBE	22
7.0	SENSOR WARRANTY	23

1.0 GENERAL INFORMATION

This manual covers all AquaMetrix P60, P65, R60 and R65 Series differential measurement pH and ORP probes.

All mounting configurations are described.

Both those probes with encapsulated preamplifiers and those with encapsulated two-wire transmitters are covered. If your probe has five wires it has an encapsulated preamplifier (P60 and R60). If your probe has two wires, or in the case of an ORP probe four wires, it has an encapsulated two-wire transmitter (P65 and R65).

The output from a two-wire transmitter type is non-isolated and un-calibrated. The system must provide 24 Vdc, with "low" isolated from earth ground, and a means of calibrating for offset and span.

NOTE: Do not discard the protective cap(s) that came with the sensor. If the sensor is removed from the process for an extended period of time, thoroughly clean the sensor, put a piece of cotton ball with few drops of water into the protective cap and replace it on the sensor. This keeps the junction from drying out which causes slow response when put back into operation or causes permanent damage to the sensor. **Sensors should not be left in dry lines or empty tanks for extended periods.**

Do not store the sensors in a dry or humid location. When storing, check the protective cap(s) regularly to make sure the cotton ball remains moist. Improper storage of sensors voids the warranty.

2.0 SPECIFICATIONS

MEASURING RANGES:

pH: 0 to 14.00 pH
ORP: R60: ± 1999 mV
R65: 0-1000 mV / ± 500 mV field selectable

FLOW RATE:

10 ft./sec max. Flow should be as low as possible in low conductivity water and in solutions with high suspended solids

WETTED MATERIALS:

P60/P65: CPVC, kynar/ceramic, glass, titanium palladium alloy and EPDM
R60/R65: CPVC, kynar/ceramic, glass, titanium palladium alloy, EPDM, and platinum

TRANSMISSION DISTANCE:

5-wire Probes: 900 meters (3000 ft.)
2-wire Probes: Limited only by cable resistance and voltage of power supply

SENSITIVITY: pH: Less than 0.005 pH
ORP: Less than 0.5mV

STABILITY: 0.03 pH / 2mV per day, non-cumulative

PRESSURE LIMIT: 100 psig @ 65°C
40 psig @ 95°C

TEMPERATURE LIMITS: -5 to 95°C
(23 to 203°F)

POWER SUPPLY LIMIT:

24VDC \pm 4V

PROBE CABLE: 15 ft. (4.6 m)

AUTOMATIC TEMPERATURE COMPENSATION:

-5 to 95°C (23 to 203°F)

P65C:

OUTPUT SPAN: 1.14mA / pH
OUTPUT OFFSET: 12mA @ 7pH
 ± 1.14 mA

MAX LOAD: 450 Ohms

R65C:

OUTPUT SPAN:
0-1000mV: 1.6mA / 100mV
 ± 500 mV: 1.6mA / 100mV
OUTPUT OFFSET:
0-1000mV: 12mA @ 500mV ± 1 mA
 ± 500 mV: 12mA @ 0mV ± 1 mA
MAX LOAD: 450 Ohms

3.0 INSTALLATION

3.1 General Instructions

3.1.1 Specific instructions for each type of probe are given in the following pages. Common to all probes are the following instructions:

- a) If the distance between the probe and the instrument is such that a direct connection is not possible, the probe cable should be routed to a junction box with a terminal strip (AquaMetrix Part No. JB1). The box should be well sealed and away from corrosion danger. Be sure that you have sufficient slack cable to allow for probe removal for calibration and servicing.
- b) Route the interconnect cable from the junction box to the instrument, preferably in metal conduit. Do not run the power cable or control cables in the same conduit with the probe interconnect cable.
- c) Remove the protective plastic caps from the end of the probe before placing in service.
- d) For best results probes should always be mounted vertically with electrodes down. If this is not possible, the probe must be at least 15° above horizontal.

3.2 ORP 4-20 mA Probes, R65

- 3.2.1
- a) ORP 4-20 mA probes have four wires; black, red, green and white. The red wire is to be connected to the +24 Vdc terminal and the back wire to the 24 Vdc common terminal via the load in the loop.
 - b) For an instrument with a range of 0 to 1000 mV the green and white wires are to be shorted.
 - c) For an instrument with a range of -500 to 500 mV the green and white wires are to be isolated from each other.

3.3 Submersion Mounting Series 8 Differential Probes Refer to Dwg# N105-72

- 3.3.1
- a) A submersion mounting kit, STC60L is available from AquaMetrix which includes 4 ft. of 1" pipe, 1-1/2" x 1" reducer, a strain relief fitting and wire mounting bracket. Proceed as follows, either with the kit or with your own hardware.
 - b) Apply a thread sealant to the thread on the cable end of the probe and screw a 1-1/2" x 1" NPT reducer onto the probe. Route the sensor cable through an appropriate length of 1" pipe and using thread sealant, screw the pipe into the reducer. The cable end of the probe should not be exposed to the process. A cable strain relief fitting should be used on the upper end of the pipe. In the kits a wire bracket is provided to aid in supporting the assembly.

NOTE: An optional protective shroud, Part No. PROTECTOR-3 should be used on the electrode end of the probe to protect the electrodes from accidental contact with the tank bottom, sides or objects in the process.

3.4 Submersion Mounting Series 6 Differential Probes **Refer to Dwg# N105-73**

- 3.4.1 a) A submersion mounting kit, STC60-6 is available from AquaMetrix which includes 4 ft. of 1" pipe, 1-1/2" x 1" reducer and a strain relief fitting. Proceed as follows, either with the kit or with your own hardware:
- b) Install the optional protective shroud, Part No. PROTECTOR-6 on the probe by threading the probe cable through it. The shroud will contact the shoulder on the probe.
- c) Install the compression fitting components on the probe in the order shown in the drawing below so that the pipe thread is towards the cable end of the probe. If you are concerned that the shroud may get pushed up and expose the electrodes you can lock it down by the positioning of the fittings.
- d) Snug up the nut of the compression fitting to locate it in the desired position. Hand tighten as much as possible, then turn 1/2 turn with a wrench.
- e) Apply a thread sealant to the pipe thread portion of the compression fitting and screw a 1-1/4" x 1" NPT reducer to it.
- f) Route the sensor cable through an appropriate length of 1" pipe and using thread sealant, screw the pipe into the reducer on the probe. The cable end of the probe should not be exposed to the process.

3.5 Flow-through tee mounting Series 8 Differential Probes **Refer to Dwg# N105-72**

- 3.5.1 a) Apply pipe sealant to the electrode end of the probe and screw it into the AquaMetrix union tee w/ adaptor (Part No. AM-MH538N9A) or any standard 1-1/2" NPT tee.

3.6 Flow-through tee mounting Series 6 Differential Probes **Refer to Dwg# N105-73**

- 3.6.1 a) Take the compression fitting apart. Apply pipe sealant to the 1-1/4" NPT thread and screw this part into a 1-1/4" tee. A larger tee with an appropriate reducer may be used.
- b) Put the compression fitting components on the probe in the order shown in the drawing. They should be in such a position that the electrodes will be in the pipe stream but not touching the opposite side of the tee.
- c) Remove the protective cap from the probe and place the probe in the tee. Now tighten the nut by hand as much as possible, then turn 1/2 turn with a wrench.

3.7 Sanitary Probe P60S, P65S, R60S, R65S

- 3.7.1 The P60S is designed with a stainless steel flange to mate with a Tri-Clover ferrule TL14AM7-2-1/2.

3.8 Insertion mounting Series 4 Differential Probes

- 3.8.1 Apply pipe sealant to the electrode end of the probe and screw it into the any standard 1-1/2" Male NPT.

3.9 Hot/Wet tap insertion mounting Series 7 Differential Probes Refer to Dwg# N106-79

- 3.9.1
- a) A ball valve assembly, P60-HTC, is available from AquaMetrix which includes the assembly and a safety shroud.
 - b) Mount the ball valve assembly in a desirable location. The assembly comes with a field selectable, 1-1/4 NPTF or socket adaptor. Make sure valve is in the close position before mounting.
 - c) Remove the union body by turning the union nut counter clockwise. Take the compression fitting apart as shown on the drawing. Insert the back end of the series 7 probe through the union body until safety notch on the probe aligns with the safety stop on the union body.
 - d) Place the union body, with the probe attached, back into the ball vale assembly and tighten union nut. Open ball valve & slide the probe into the process.
 - e) Put the compression fitting components on the probe in the order shown in the drawing and tighten the nut by hand as much as possible, then turn 1/2 turn with a wrench to keep probe in place.
 - f) Insert protective shroud as shown.

4.0 SERVICE AND MAINTENANCE

4.1 Probe Cleaning

- 4.4.1
- a) The probe should be kept reasonably clean to avoid measurement errors. Frequency of cleaning can only be determined by experience. To clean proceed as follows:
 - b) Rinse with clean warm water.
 - c) Soak the end of the probe in warm water and dish detergent for 3 or 4 minutes.
 - d) Brush the end of the probe, particularly the three electrodes with a soft bristle brush such as a tooth brush. Take care not to scratch the glass electrode.
 - e) If the probe is still not clean, it may have to be cleaned with acid. **CAUTION:** *Do not acid clean probes used in processes containing cyanide solutions.* Some experimentation may be required to determine the most suitable acid for your process. Use the most dilute acid which is effective. Normally 10 parts of water to one part muriatic acid is sufficient. *Do not use hydrofluoric acid.*
 - f) Soak the probe for not more than 5 minutes in the chosen acid; then rinse thoroughly with clean warm water and soak in water for 3-5 minutes.
 - g) Calibrate the system in accordance with the instrument instruction manual.

4.2 Replacement of Salt Bridge for Series 4, 6, 7 & S Differential Probes

- 4.2.1
- a) If the system cannot be calibrated after cleaning the probe, it may be necessary to replace the standard cell solution. A kit is available from AquaMetrix for this purpose (Part No. C35-17K). Proceed as follows: Refer to DWG N106-60.
 - b) Hold the probe vertically with the sensor face up. Insert long nose pliers in the blind holes in the salt bridge and turn counter-clockwise taking care not to damage the glass electrode. Discard the used salt bridge.
 - c) Up-end the probe and pour out the contents of the standard electrode chamber. Flush the chamber with a small amount of pH 7 buffer or clean water.
 - d) Refill the chamber with 7pH buffer solution up to the tip of the electrode inside the chamber. DO NOT OVERFILL. It is important to leave space for the salt bridge thread and a small amount of air.
 - e) Screw the new salt bridge into the cavity until finger tight. Now turn 1/4 turn with long nose pliers. The front face of the salt bridge should be flush with the probe face.

4.3 Replacement of Salt Bridge for Series 8 Differential Probes

- 4.3.1
- a) If the system can't be calibrated after cleaning the probe, it may be necessary to replace the standard cell solution. A kit is available from AquaMetrix for this purpose (Part No. AM60-9765K). Proceed as follows: Refer to DWG N106-60.
 - b) Hold the probe vertically electrodes up. Remove the used salt bridge using a 9/16" socket wrench, turning counter-clockwise. Discard the used salt bridge.
 - c) Dispose of the used solution inside the bridge chamber and flush with pH 7 solution or distilled water.
 - d) Refill the chamber with 7pH buffer solution, up to the tip of the electrode, inside the chamber. DO NOT OVERFILL. It is important to leave space for the salt bridge thread and a small amount of air.
 - e) Screw the new salt bridge into the cavity until finger tight. Now perform a 1/4 turn with a 9/16" socket wrench. The salt bridge edges should be flush with the front of the probe face.

4.4 Storage

- 4.4.1 Do not discard the protective cap(s) that came with the sensor. If the sensor is removed from the process for an extended period of time, thoroughly clean the sensor, put a piece of cotton ball with few drops of water into the protective cap and replace it on the sensor. This keeps the junction from drying out which causes slow response when put back into operation or causes permanent damage to the sensor. **Sensors should not be left in dry lines or empty tanks for extended periods.**

Do not store the sensors in a dry or humid location. When storing, check the protective cap(s) regularly to make sure the cotton ball remains moist. Improper storage of sensors voids the warranty.

5.0 TROUBLESHOOTING AND SERVICE

5.1 Checking 5-wire Differential Probes P60 and R60

The probe can be checked by a few simple measurements. Two pH buffer solutions, 7 pH and either 4 pH or 10 pH, and a multimeter are required. For ORP probes two calibration solutions, 200 and 600 mV, are required. Millivolt solutions may be $\pm 20\%$ of nominal value. Actual value is noted on the bottle.

5.1.1 P60C pH probes

- a) Clean the probe as described in Section 4.1. If the system cannot be calibrated, replace the salt bridge and 7pH buffer solution as described in 4.2. If the system still can't be calibrated check the probe as follows:
- b) Disconnect red, green, yellow and black wires at the junction box. If you are not using a junction box, disconnect at the instrument after shutting off the power.
- c) Place the probe in 7 pH buffer. Allow enough time for the temperature of the probe and buffer to stabilize at room temperature.
- d) Measure the resistance between the yellow and black wires to check the probe's temperature compensator. The resistance should be between 250 and 350 ohms at 25°C. If the resistance is within specifications the probes thermistor is functioning correctly.
- e) Reconnect the yellow and black wires and restore power to the instrument.
- f) Measure the voltage between the red and green wires. If it is not within -50 to $+50$ millivolts with the probe in 7 pH buffer, the probe is defective. If the voltage is OK proceed to the next step.
- g) Rinse the probe and place it in 4 pH or 10 pH buffer. Allow it to stabilize then check the voltage again between the red and green wires. If the voltage is between 100 and 230 millivolts (negative in 10 pH buffer, positive in 4 pH buffer) the probe is within specifications.

5.1.2 R60C ORP probes

- a) Clean the probe as described in Section 4.1. If the system cannot be calibrated, replace the salt bridge and 7pH buffer solution as described in 4.2. If the system still can't be calibrated check the probe as follows:
- b) Disconnect red, green, yellow and black wires at the junction box. If you are not using a junction box, disconnect at the instrument after shutting off the power.
- c) Place the probe in 200 mV solution. Allow enough time for the temperature of the probe and solution to stabilize at room temperature.
- d) Measure the resistance between the yellow and black wires to check the probe's temperature compensator. The resistance should be between 250 and 350 ohms at 25°C. If the resistance is within specifications the probes thermistor is functioning correctly.
- e) Reconnect the yellow and black wires and restore power to the instrument.

- f) Measure the voltage between the red and green wires. The reading should be between 160 and 240 mV; otherwise, the probe is defective. If the voltage is OK proceed to the next step.
- g) Rinse the probe and place it in 600 mV solution. Allow it to stabilize then check the voltage again between the red and green wires. If the voltage is between 560 and 640 mV, the probe is within specifications.

5.2 Checking Probes P65 and R65 (4-20 mA output)

The operation of the 2-wire, 4-20 mA, probe can be checked by a few simple measurements. Two pH buffer solutions, 7 pH and either 4 pH or 10 pH, and a dc milliammeter are required.

5.2.1 P65C pH Probe

- a) Disconnect the red wire at the instrument or power supply and connect it to the milliammeter (-) black.
 - b) Connect the milliammeter (+) red to the instrument or power supply red wire output terminal.
 - c) Rinse the probe and place it in 7 pH buffer. Allow the temperature of the buffer and probe to stabilize at room temperature.
 - d) Check the offset of the probe by reading the milliammeter. The reading should be between 11 and 13 mA. If not the probe is defective. If the offset is OK, note the exact reading and proceed to the next step.
 - e) Rinse the probe and place it in 4 pH or 10 pH buffer. Allow the temperature of the probe and buffer to stabilize at room temperature. Now check the span of the probe by reading the milliammeter. If the probe is in 4 pH buffer, the reading should be between 2.85 and 3.99 lower than the reading obtained in (d).
If the probe is in 10 pH buffer, the reading should be between 2.85 and 3.99 higher than the reading obtained in (d).
If this test is not satisfied the probe is defective.
If you wish to check the temperature compensator proceed to step (f).
- If the span of the probe drops below 2.85mA than the probe still can be used adjustments will have to be made to the receiving device to compensate for the low span.
- f) To check the operation of the temperature sensor in the probe, heat the buffer used in step (e) with the probe in it to about 50°C. The milliammeter reading should be within ± 0.15 mA of the reading observed in step (e).

5.2.2 ORP Probes R65

- a) Disconnect the red wire at the instrument or power supply and connect it to the milliammeter (-) black. Connect the milliammeter (+) red to the instrument or power supply red wire output terminal.
- b) For a probe with range of -500 to 500 mV: (white and green wire open). Rinse the probe and place it in the 200 mV solution. The milliammeter should read between 14.4 and 16.0 mA.

Rinse the probe and place it in the 600 mV solution. The meter should read between 19.55 and 20.45 mA.

- c) For a probe with range of 0 to 1000 mV: (white and green wire joined). Rinse the probe and place it in the 200 mV solution. The milliammeter should read between 6.4 and 8.0 mA.

Rinse the probe and place it in the 600 mV solution. The meter should read between 12.8 and 14.4mA.

5.3 Customer Service

- 5.3.1 If a problem has not been resolved with the above procedures, a telephone consultation with your AquaMetrix representative, or directly with AquaMetrix will provide the answer.

AquaMetrix Inc.
1245 Maple Hill Court, Unit 7
Newmarket, Ontario
L3Y 9E8 Canada

Tel: (800) 742-1413
Tel: (905) 954-0841
Fax: (905) 954-0415
Email: support@aquametrix.com

5.4 Parts and Accessories

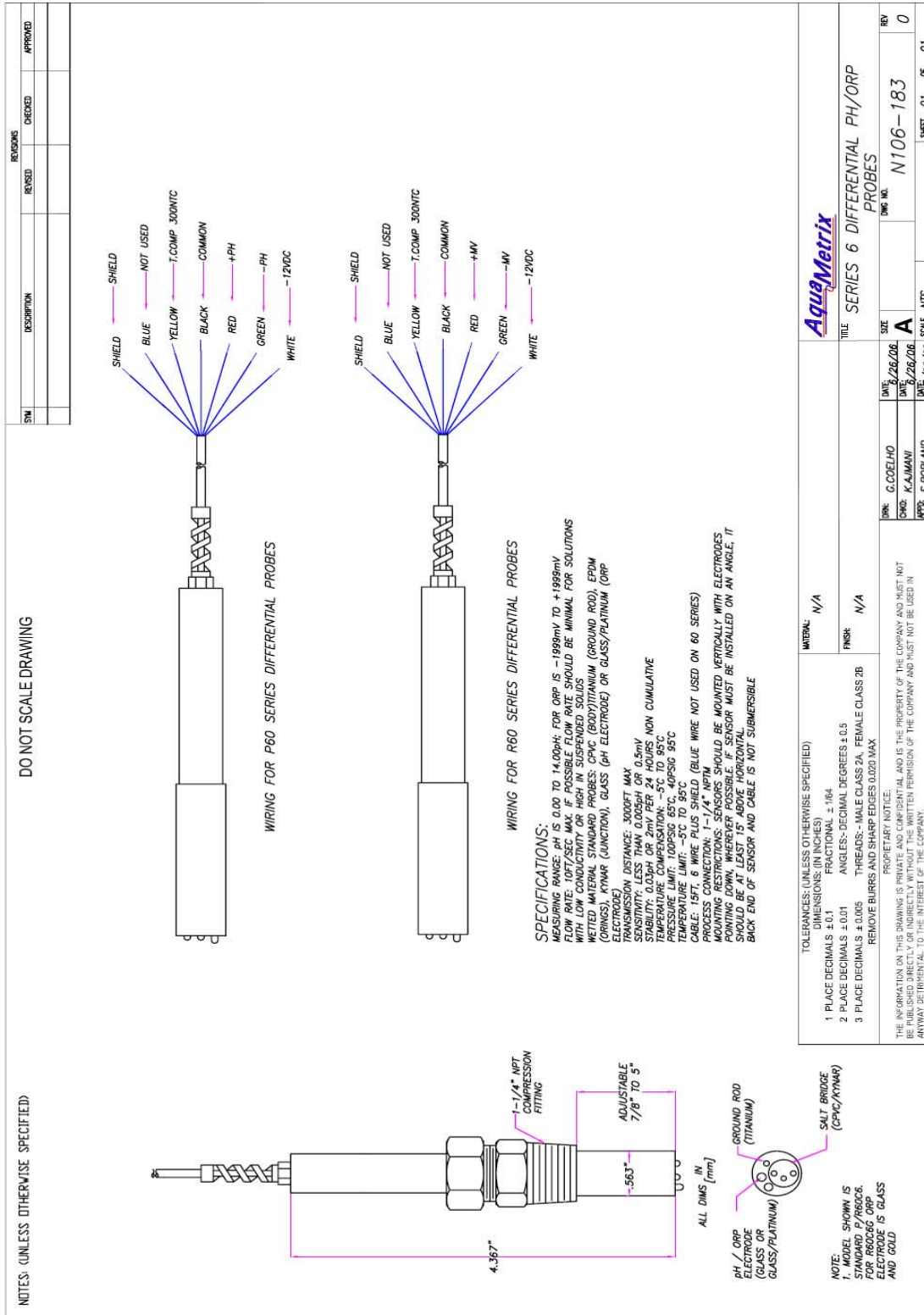
<i>Description</i>	<i>Part #</i>
Submersion Mounting Kit for Series -8 Probes	STC60L
Submersion Mounting Kit for Series -6 Probes	STC60-6
Protective shroud for Series -8 Probes	PROTECTOR-3
Protective shroud for Series -6 Probes	PROTECTOR-6
Hot/Wet tap Ball Valve Assembly for Series -7	P60-HTC
Union Mounting Tee w/ Adaptor for Series -8	AM-MH538N9A
500 mL pH 7 Buffer Solution	A35-14
4L pH 7 Buffer Solution	A35-118
500 mL pH 4 Buffer Solution	A35-13
4L pH 4 Buffer Solution	A35-117
500 mL pH 10 Buffer Solution	A35-24
4L pH 10 Buffer Solution	A35-119
500 mL 200mV Buffer Solution	A35-40
4L 200mV Buffer Solution	A35-115
500 mL 600mV Buffer Soltion	A35-41
4L 600mV Buffer Solution	A35-116
Salt bridge kit for Series -4, -6, -7 & -S (Package of 3, incl. salt bridge and cell solution)	C35-17(K)
Salt bridge kit for Series -8 (Package of 3, incl. salt bridge and cell solution)	AM60-9765(K)
Junction box with terminal strip	JB-1
50 ft. 5-wire Interconnect cable dressed both ends	C42-5P-050

5.5 Probe Return

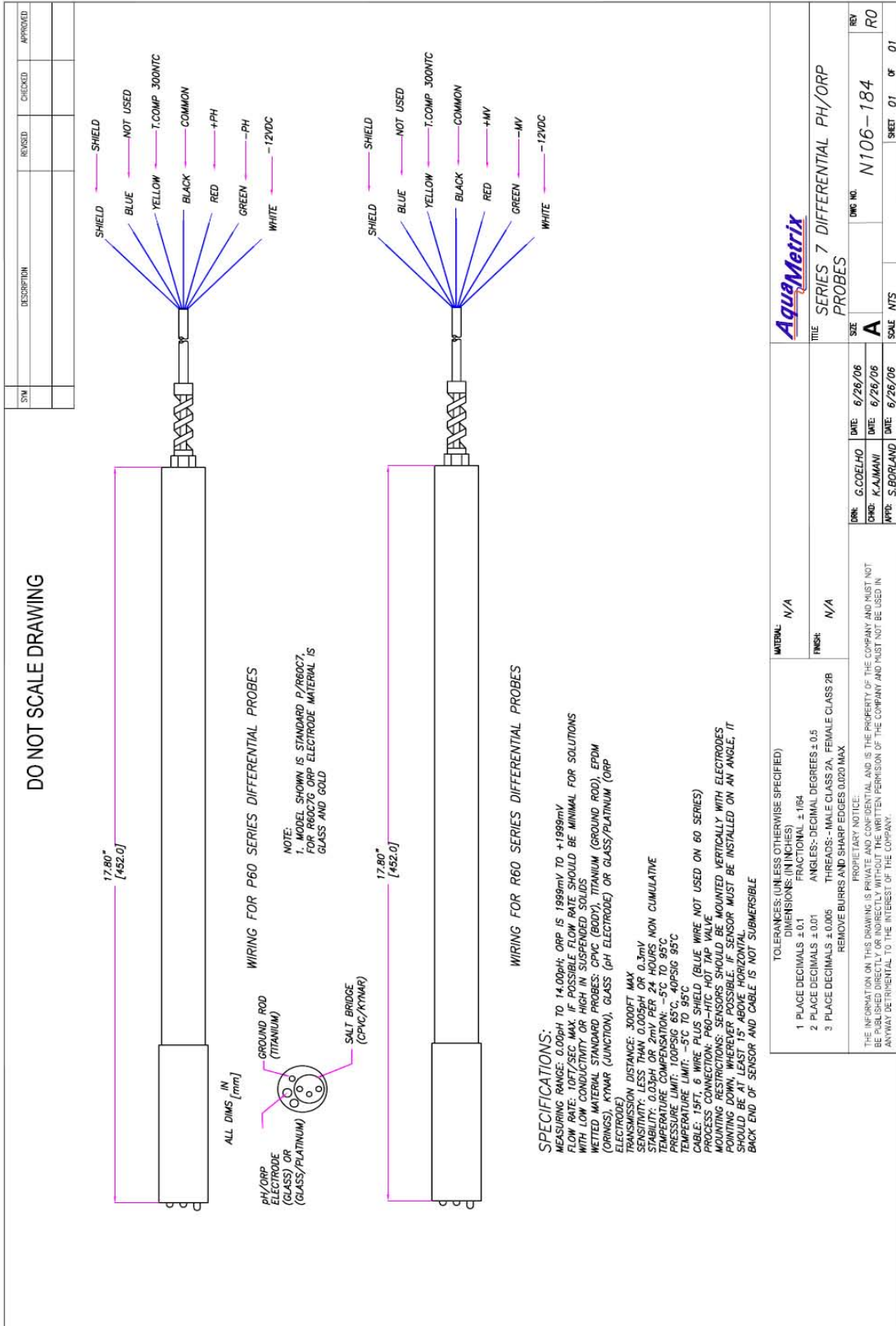
- 5.5.1 If you are returning a probe for inspection, enclose description of the problem. Pack the probe adequately to avoid damage to the glass electrode and ensure that it will not be exposed to temperatures below -5°C . AquaMetrix cannot be responsible for shipping damage nor for damage due to frozen electrodes.

For safety reasons, AquaMetrix cannot accept probes which have not been thoroughly cleaned to remove all process material.

6.2 N106-183 SERIES 6 DIFFERENTIAL pH/ORP PROBES



6.3 N106-184 SERIES 7 DIFFERENTIAL pH/ORP PROBES



6.4 N106-182 SERIES 8 DIFFERENTIAL pH/ORP PROBES

REVISIONS

NO.	DESCRIPTION	REVISED	CHECKED	APPROVED

DO NOT SCALE DRAWING

NOTES: (UNLESS OTHERWISE SPECIFIED)
NA

1.5 FT CABLE

1-1/2" NPT

PROBE BODY CPVC

1-1/2" NPT

2.4 [60]

7.10 [180]

1.44 [36.6]

SENSOR CLEARANCE FOR FRONT THREAD MOUNT

ALL DIMS IN [mm]

2.14 [55]

1.85 [47] MAX

1.50 [38.1]

GROUND ROD (TITANIUM) 9/16" [15mm] HEX (CPVC/KYMAR)

SALT BRIDGE

REVISIONS

NO.	DESCRIPTION	REVISED	CHECKED	APPROVED

WIRING FOR P60 SERIES DIFFERENTIAL PROBES

WIRING FOR P60 SERIES DIFFERENTIAL PROBES

SPECIFICATIONS:

MEASURING RANGE: pH is 0.00pH to 14.00pH ; ORP is -1999mV to +1999mV

FLOW RATE: 1.0FT/SEC MAX. IF POSSIBLE FLOW RATE SHOULD BE MINIMAL FOR SOLUTIONS WITH LOW CONDUCTIVITY OR HIGH IN SUSPENDED SOLIDS

WETTED MATERIAL STANDARD PROBES: CPVC (BODY), TITANIUM (GROUND ROD), EPDM (ORINGS), KYMAR (JUNCTION), GLASS (PH ELECTRODE) OR GLASS/PLATINUM (ORP ELECTRODE)

TRANSMISSION DISTANCE: 3000FT MAX

SENSITIVITY: LESS THAN 0.005pH OR 0.5mV

STABILITY: 0.03pH OR 2mV PER 24 HOURS NON CUMULATIVE

TEMPERATURE COMPENSATION: -5°C TO 95°C

PRESSURE LIMIT: 100PSIG 65°C, 40PSIG 95°C

TEMPERATURE LIMIT: -5°C TO 95°C

CABLE LENGTH: 6 FT WIRE PLUS SHIELD (BLUE WIRE NOT USED ON 60 SERIES)

PROBES OPERATING TEMPERATURE: 0°C TO 70°C

MOUNTING RESTRICTIONS: SENSORS SHOULD BE MOUNTED VERTICALLY WITH ELECTRODES POINTING DOWN WHEREVER POSSIBLE. IF SENSOR MUST BE INSTALLED ON AN ANGLE, IT SHOULD BE AT LEAST 15° ABOVE HORIZONTAL.

BACK END OF SENSOR AND CABLE IS NOT SUBMERSIBLE

NOTE:

- MODEL SHOWN IS STANDARD P60C3/P60C6, ANY OTHER pH ELECTRODE MATERIAL IS AVAILABLE
- FOR P60C3C ORP ELECTRODE MATERIAL IS GLASS AND GOLD

TOLERANCES: UNLESS OTHERWISE SPECIFIED)

1 PLACE DECIMALS ±0.01 FRACTIONAL ±.164

2 PLACE DECIMALS ±0.01 ANGLES: DECIMAL DEGREES ±0.5

3 PLACE DECIMALS ±0.005 THREADS - MALE CLASS 2A, FEMALE CLASS 2B REMOVE BURRS AND SHARP EDGES 0.020 MAX

PROPRIETARY NOTICE:
THE INFORMATION ON THIS DRAWING IS PRIVATE AND CONFIDENTIAL AND IS THE PROPERTY OF THE COMPANY AND MUST NOT BE REPRODUCED OR TRANSMITTED IN ANY FORM OR BY ANY MEANS WITHOUT THE WRITTEN PERMISSION OF THE COMPANY AND MUST NOT BE USED IN ANYWAY DETRIMENTAL TO THE INTEREST OF THE COMPANY.

AquaMetric

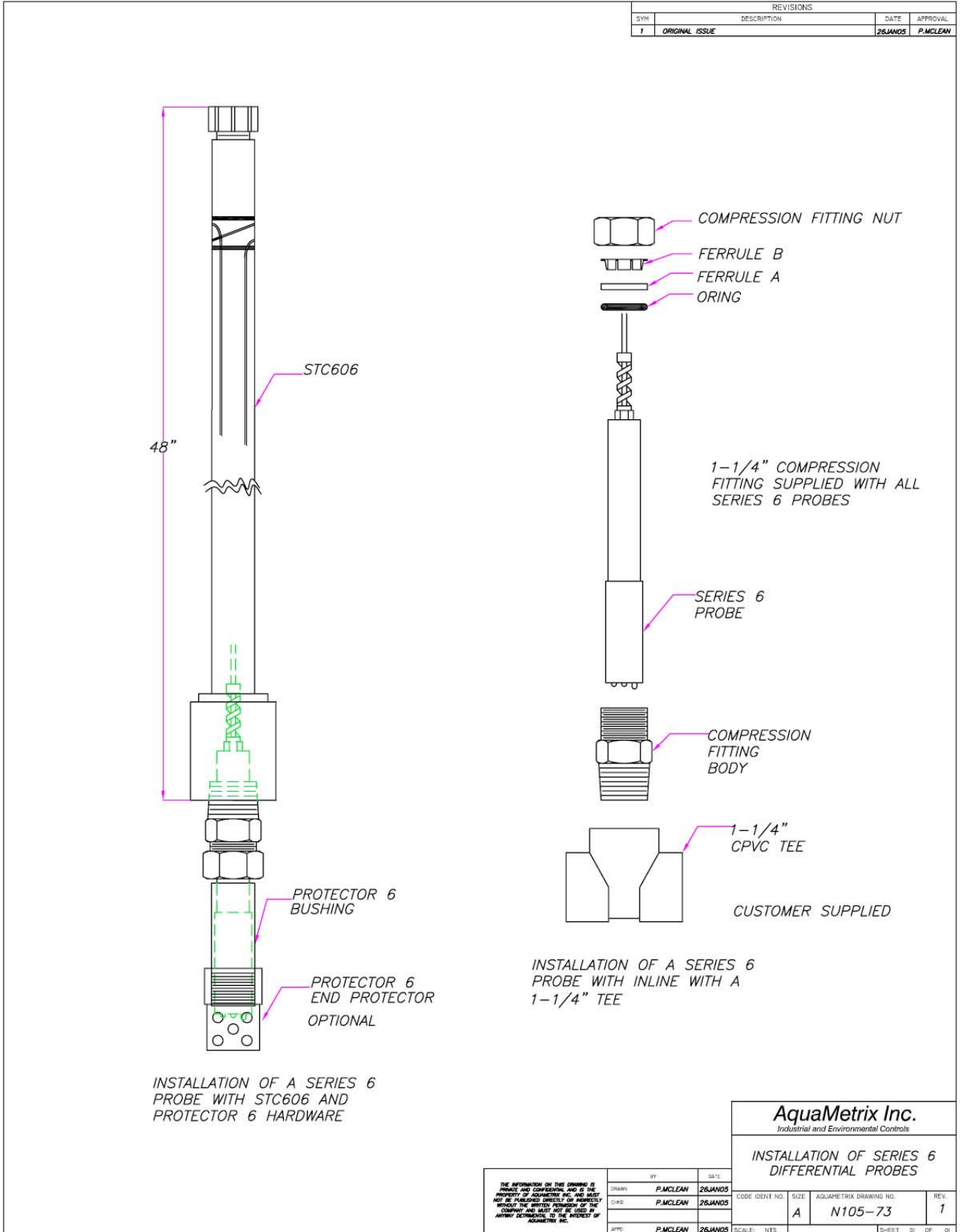
SERIES 8 DIFFERENTIAL PH/ORP PROBES

DATE: 6/26/06
DRAWN BY: K. J. JAWAN
CHECKED BY: S. GORLAND
DATE: 6/26/06

SIZE: A
DWG. NO.: N106-182

SHEET 01 OF 01

6.6 N105-73 INSTALLATION OF SERIES 6 DIFFERENTIAL PROBES



6.7 N106-79 INSTALLATION OF SERIES 7 DIFFERENTIAL PROBES

SYN		REVISIONS		DATE		APPROVAL	
1	ORIGINAL ISSUE			26JAN05		PMCLEAN	

SPECIFICATIONS P60-HTC
WETTED MATERIALS: CPVC, EPDM
MAXIMUM RATINGS: 200PSI @ 25°C / 30PSI @ 100°C

1. REMOVE PROBE FROM BALL VALVE
2. PULL BACK SAFETY SHROUD
3. LOOSEN SECURING NUT AND WITHDRAW PROBE TO SAFETY STOP
4. CLOSE BALL VALVE
5. UNSCREW UNION CCW TO REMOVE PROBE FROM UNION BODY
6. PULL PROBE FORWARD THROUGH PROBE FITTING

1-1/4" NPTF OR NPTF (SELECTABLE)

1-1/4" CPVC BALL VALVE TRUE UNION

UNION NUT

UNION BODY

SAFETY STOP

EPDM O-RINGS 3X

FERRULE ASB

COMPRESSION FITTING NUT

SAFETY SHROUD TO BE INSTALLED WHEN PROBE IS IN LINE

38" MINIMUM REQUIRED TO REMOVE SAFETY SHROUD

24-1/2" WITH SAFETY SHROUD INSTALLED

10-1/2" APPROX

SERIES 7 DIFFERENTIAL PROBE NOT INCLUDED WITH P60-HTC

AquaMetrix Inc.
 Industrial and Environmental Controls

P60-HTC HOT TAP VALVE
 ASSEMBLY FOR SERIES 7
 DIFFERENTIAL PROBES

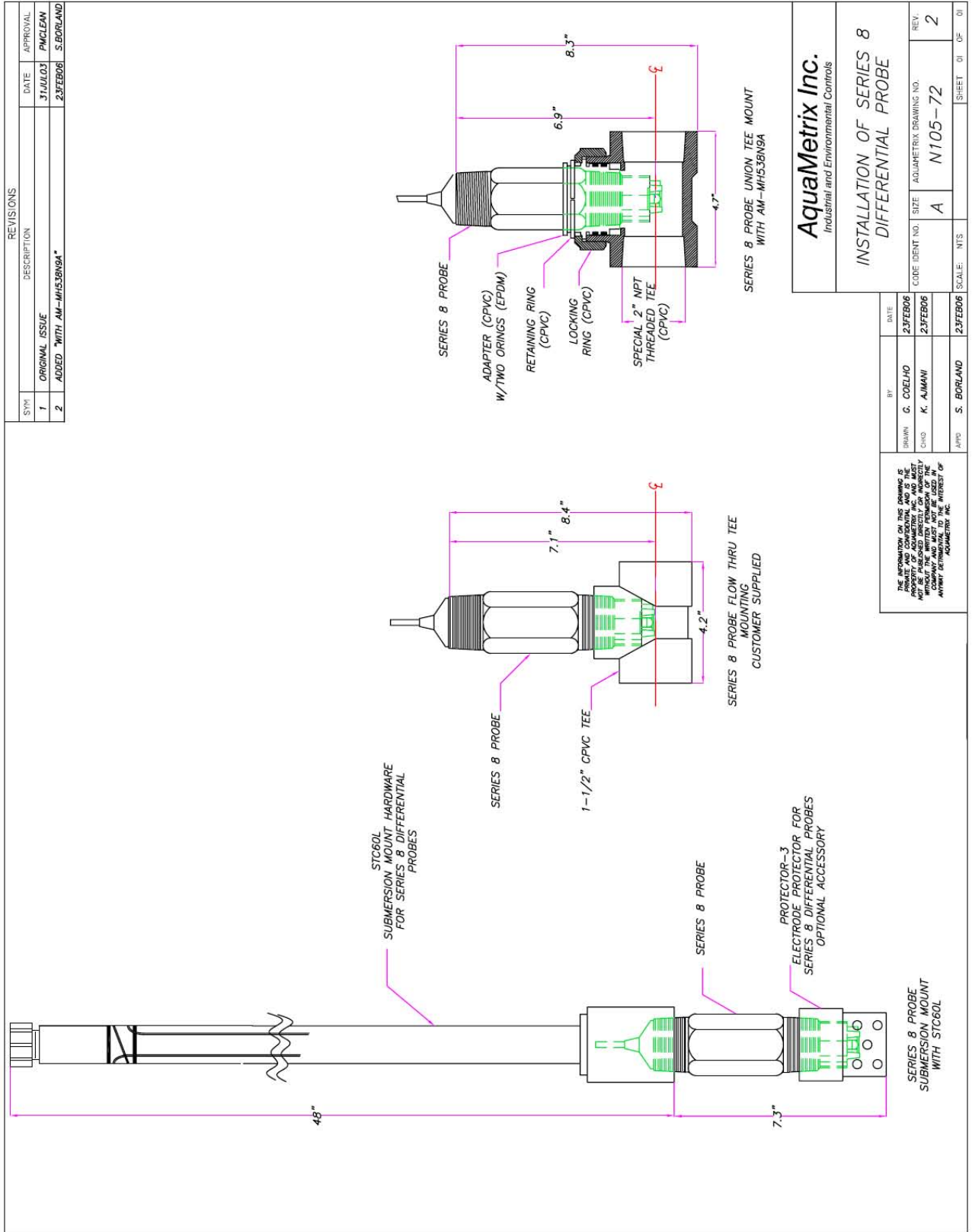
DATE	BY	DESCRIPTION	REV.
26JAN05	PMCLEAN	26JAN05	1
		BRIDGE	

THE INFORMATION ON THIS DRAWING IS
 PRIVATE AND CONFIDENTIAL AND IS THE
 PROPERTY OF AQUAMETRIX INC. IT IS NOT TO
 BE REPRODUCED, COPIED, OR DISSEMINATED
 IN ANY MANNER WITHOUT THE WRITTEN
 CONSENT OF AQUAMETRIX INC.

CODE IDENT NO.	SIZE	AQUAMETRIX DRAWING NO.	REV.
A	N106-79		1

SCALE	NTS	SHEET	OF
26JAN05		01	01

6.8 N105-72 INSTALLATION OF SERIES 8 DIFFERENTIAL PROBE



REVISIONS		
SYM	DESCRIPTION	DATE
1	ORIGINAL ISSUE	31 JUL 03
2	ADDED "WITH AM-MH53BN9A"	23 FEB 06

APPROVAL	
DATE	NAME
31 JUL 03	PMCLEAN
23 FEB 06	S. BORLAND

AquaMetrix Inc.
Industrial and Environmental Controls

INSTALLATION OF SERIES 8 DIFFERENTIAL PROBE

DATE	BY
23 FEB 06	G. COELHO
23 FEB 06	K. AJMANI
23 FEB 06	S. BORLAND

THE INFORMATION ON THIS DRAWING IS PRIVATE AND CONFIDENTIAL AND IS THE PROPERTY OF AQUAMETRIX INC. IT IS NOT TO BE PUBLISHED DIRECTLY OR INDIRECTLY WITHOUT THE WRITTEN PERMISSION OF THE COMPANY AND MUST NOT BE REPRODUCED IN ANY MANNER WITHOUT THE WRITTEN PERMISSION OF AQUAMETRIX INC.

REV.	SIZE	ADJAHMETRIX DRAWING NO.
2	A	N105-72

SCALE	NTS	SHEET	OF
		01	01

6.9 N106-60 INSTALLATION OF SALT BRIDGE IN A DIFFERENTIAL PROBE

REVISIONS		DATE	APPROVAL
1	ORIGINAL ISSUE	1/14/03	PMCLEAN
2	MODIFIED DRAWING LAYOUT	24/JUL/03	PMCLEAN
3	EDITED ANNOTATIONS	1/14/06	SBORLAND

SALT BRIDGE
 PN C35-17(K) FOR SERIES -4, -6, -7 & -S
 AM60-976S(K) FOR SERIES -8

pH BUFFER #7

FILL UP CAVITY TO TOP OF ELECTRODE DO NOT OVERFILL

DIFFERENTIAL PH/ORP PROBES SERIES -4, -6, -7, -8 & -S
 SERIES 6 SHOWN FOR SERIES -4, -7, -8 & -S PROCEDURE IS IDENTICAL

AquaMetrix Inc. Industrial and Environmental Controls	
INSTALLATION OF SALT BRIDGE IN A DIFFERENTIAL PROBE	
CODE IDENT NO. SIZE	AQUAMETRIX DRAWING NO. REV.
A N106-60	3
SCALE: NTS	SHEET 01 OF 01

BY	DATE
PMCLEAN	24/JUL/03
CHKD	DATE
NAME	DATE
ENGR	DATE
NAME	DATE
APPD	DATE
PMCLEAN	31/JUL/03

THE INFORMATION ON THIS DRAWING IS PRIVATE AND CONFIDENTIAL AND IS NOT TO BE PUBLISHED DIRECTLY OR INDIRECTLY IN ANY MANNER WITHOUT THE WRITTEN CONSENT OF AQUAMETRIX, INC.

7.0 SENSOR WARRANTY

**30-MONTH AQUAMETRIX DIFFERENTIAL SENSOR WARRANTY
REPLACEMENT PLAN**

AquaMetrix, Inc. will replace or repair any AquaMetrix Differential Sensor that fails due to defects in material or workmanship for a period of up to 12 months from the date of shipment from our facility. In this case, the following condition applies:

- 0-12 months oldSensor is replaced free.**
- 13-30 months oldSensor is replaced at approx. 2/3 the current list price.**

Each sensor is identified with a unique serial number that is used by AquaMetrix, Inc. to validate the month and year of shipment. A warranty claim will not be honored if defects are not reported within the warranty period, or if AquaMetrix determines that defects or damages are due to normal wear, misapplication, lack of maintenance, abuse, improper installation, alteration, or abnormal conditions. AquaMetrix's obligation under this warranty shall be limited to, at its option, replacement or repair of this product. The product must be returned to AquaMetrix Inc, freight prepaid, for examination. The product must be accompanied with an MSDS for all the process chemicals used, must be thoroughly cleaned and any process chemicals removed before it will be accepted for replacement or repair. AquaMetrix liability shall not exceed the cost of the product. Under no circumstances will AquaMetrix be liable for any incidental or consequential damages, whether to person or property. AquaMetrix will not be liable for any other loss, damage or expense of any kind, including loss of profits, resulting from the installation, use, or inability to use this product.