

Series 8000 Air Actuated Valves for liquid service



- **Pneumatically actuated valves** with powerful closing spring for reliable operation
- **Compact design** with integral solenoid, quick exhaust and position switches that protects components, simplifies piping and minimizes space requirements
- **Factory Mutual (FM), CSA (6.5 C/I & 3.9) approved** safety shut-off valves
- **Hazardous Location approved:** Intrinsically Safe for Class I, Div. 1 (and ATEX Zone 2/22 when ordered with the ATEX IS solenoid); Non-Incendive for Class I, Div. 2
- Top mounted 360-degree open-shut visual position indication
- **Cast iron and carbon steel body assemblies** with internal trim options to handle general purpose or severe fluids
- **Ambient temperature ranges** of -40°F to 140°F ; **Fluid temperature range** of -40°F to 550°F
- **Application flexibility** provided with 3/8" (DN10) through 2" (DN50) line sizes & line pressures up to 740 psig
- **Actuator assemblies are field-replaceable** and available in 120VAC 50/60 Hz, 240VAC 50/60 Hz, and 24VDC (with low power option), rated for NEMA 4, NEMA 4X and IP65

Features & Benefits

MAXON Series 8000 Air Actuated Valves combine a unique space-saving design with a maintenance-free body and a replaceable actuator for easy installation and smooth, trouble-free operation.

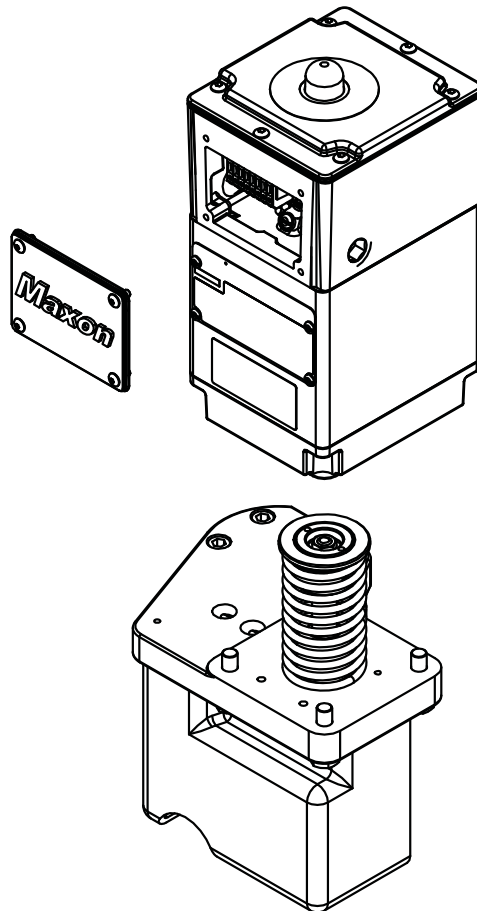
The valve's quick exhaust and powerful closing spring provide valve closure in less than one second and reliable, long-life operation.

Series 8000 Valve's compact design simplifies piping design and minimizes space requirements.

The field-replaceable actuator provides easier maintenance and reduced downtime. The actuator can also be rotated around the valve body in 90° increments to fit your specific application requirements.

A unique stem seal design eliminates packing adjustments for reduced maintenance and minimized drag on closing.

The top-mounted open-shut indicator is visible from all angles for easy proof of valve position. SIL3 capable design provides easy design for safety instrumented systems in the IEC 61508 and 61511 process. FM and CSA approvals for use as a fuel safety shut-off valve making easy integration with worldwide certifications.



Switch Assemblies

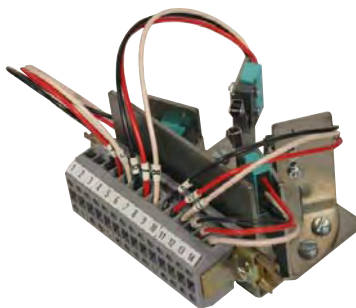
- Provides positive valve position - open or closed
- Complies with "proof of closure" requirements
- Easily integrates with an analog control system, DCS or PLC

VOS2/VCS2 Switch Assemblies with Terminal Blocks and Leads Mounted

- Factory-mounted to terminal strip to shorten installation time
- Easy replacement (2 screws)
- Locating pins guarantee accurate mounting position
- No adjustment required



V7 Assembly for General Purpose and Intrinsically Safe Class I Div. 1 Areas and Zone 0 Areas



IP67 Switch Assembly for Non-Incendive Class I Div. 2 and Zone 2 Areas and Optional Class I Div. 1 Areas and Zone 0 Areas

Body and Trim Selections

Cast iron and carbon steel body assemblies feature metal-to-metal seating that meets FCI 70-2-1998 control valve standard for Class VI seat leakage. Industrial-strength high alloy discs and hex nuts are available for severe fluids. Contact MAXON with your specific application details.

Valve bodies are available in your choice of threaded, flanged and socket-welded connections. Bodies are currently available in 3/8" (DN10) through 2" (DN50).

Normally-closed shut-off valves use instrument air to open quickly. Removal of electrical signal allows release of control air through solenoid and quick exhaust valve allowing the Series 8000 Valve to close in less than one second. Optional speed control set kit available for slower opening adjustment.

Series 8031, 8032 & 8033







require 30-100 psig instrument air

Series 8131, 8132 & 8133

require 30-100 psig instrument air



Agency Approvals and Certifications

General Purpose Valves 8031, 8131 Series		Non-Incendive/Non-Sparking Valves 8032, 8132 Series		Intrinsically Safe Valves 8033, 8133 Series	
Standards	Markings	Standards	Markings	Standards	Markings
FM Approvals FM 7400		FM 7400 FM 3611 FM 3600 FM 3810		FM 7400 FM 3610 FM 3600 FM 3810	
CSA International CSA 6.5	 C/I	CSA 6.5 CSA 22.2 No. 213 CSA 22.2 1010.1 CSA E60079-0 CSA E60079-15	 C/I 03.1433937	CSA 6.5 CSA 22.2 No. 157 CSA 22.2 1010.1 CSA E60079-0 CSA E60079-11	 C/I 03.1433937X

NOTE: Product certified to meet the following: Low Voltage Directive (73/23/EEC); EMC Directive (89/336/EEC)